



CUSTOMER

SAP GUI for Windows 8.00

Release Notes

www.sap.com/contactsap

© 2020 SAP SE or an SAP affiliate company. All rights reserved.
No part of this publication may be reproduced or transmitted in any form or for any purpose without the express permission of SAP SE or an SAP affiliate company.

The information contained herein may be changed without prior notice. Some software products marketed by SAP SE and its distributors contain proprietary software components of other software vendors. National product specifications may vary.

These materials are provided by SAP SE or an SAP affiliate company for informational purposes only, without representation or warranty of any kind, and SAP or its affiliated companies shall not be liable for errors or omissions with respect to the materials. The only warranties for SAP or SAP affiliate company products and services are those that are set forth in the express warranty statements accompanying such products and services, if any. Nothing herein should be construed as constituting an additional warranty.

In particular, SAP SE or its affiliated companies have no obligation to pursue any course of business outlined in this document or any related presentation, or to develop or release any functionality mentioned therein. This document, or any related presentation, and SAP SE's or its affiliated companies' strategy and possible future developments, products, and/or platform directions and functionality are all subject to change and may be changed by SAP SE or its affiliated companies at any time for any reason without notice. The information in this document is not a commitment, promise, or legal obligation to deliver any material, code, or functionality. All forward-looking statements are subject to various risks and uncertainties that could cause actual results to differ materially from expectations. Readers are cautioned not to place undue reliance on these forward-looking statements, and they should not be relied upon in making purchasing decisions.

SAP and other SAP products and services mentioned herein as well as their respective logos are trademarks or registered trademarks of SAP SE (or an SAP affiliate company) in Germany and other countries. All other product and service names mentioned are the trademarks of their respective companies. See www.sap.com/copyright for additional trademark information and notices.

THE BEST RUN



TABLE OF CONTENTS

| | |
|---|----|
| SAP GUI FOR WINDOWS LIFECYCLE..... | 4 |
| PLATFORM SUPPORT | 4 |
| NEW FEATURES IN RELEASE 8.00..... | 5 |
| True 64bit version of SAP GUI for Windows | 5 |
| HTML Control based on WebView2 (Edge) | 7 |
| <i>Fully usable external browser window.....</i> | 7 |
| <i>Embedded HTML documents can use ActiveX objects.....</i> | 7 |
| Rendering and UI features | 8 |
| <i>Modernized rendering in Quartz Themes.....</i> | 8 |
| <i>Displaying editing mode ("INS" / "OVR") in Belize and Quartz themes</i> | 8 |
| <i>SAP GUI Scripting: Correct handling of visibility properties for themes as of Belize</i> | 8 |
| <i>Branding Image: Images can be configured per SAP system and client</i> | 9 |
| <i>Revised font settings dialog and persistence of font settings per character set</i> | 10 |
| SAP Logon..... | 11 |
| <i>Secure Network Connection without Single Sign-On as configurable default.....</i> | 11 |
| <i>Improvements for sorting and ordering columns.....</i> | 11 |
| <i>Language Selection: Checking operating system prerequisites</i> | 11 |
| <i>SAP UI Landscape: Backup for user defined files.....</i> | 11 |
| Usability improvements | 12 |
| <i>Checkboxes and radiobuttons / radiobutton groups: Improved keyboard navigation</i> | 12 |
| <i>Dialogbox Container: Improved keyboard navigation.....</i> | 12 |
| <i>Table Controls: Improved keyboard navigation</i> | 13 |
| <i>Combobox Control: Showing keys and sorting by keys.....</i> | 13 |
| <i>ALV Grid Control: Copy & Paste with gaps</i> | 14 |
| <i>ALV Grid Control: Control characters are no longer pasted into editable ALV</i> | 15 |
| <i>ALV Grid Control: Improved keyboard navigation for comboboxes</i> | 15 |
| <i>Tree Controls: Scrolling indicator.....</i> | 15 |
| Security..... | 16 |
| <i>Checking the validity of the registration of ActiveX Controls invoked by SAP GUI</i> | 16 |
| NEW FEATURES IN PATCHLEVEL 3 OF RELEASE 8.00..... | 16 |
| HTML Control based on Edge: Custom URI support added..... | 16 |
| NEW FEATURES IN PATCHLEVEL 4 OF RELEASE 8.00..... | 16 |
| Keyboard improvements for menus..... | 16 |
| Enhanced Search for command field (OK Code field) | 17 |
| NEW FEATURES IN PATCHLEVEL 7 OF RELEASE 8.00..... | 18 |
| SAP UI Landscape Validation Tool..... | 18 |
| Warning when local SAP UI Landscape file cannot be written..... | 18 |
| NEW FEATURES IN PATCHLEVEL 10 OF RELEASE 8.00..... | 18 |
| Support for new ABAP method to detect used browser engine in HTML Control | 18 |
| NEW FEATURES IN PATCHLEVEL 13 OF RELEASE 8.00..... | 18 |
| Support for new ABAP method to set the focus on a specific button in toolbar control..... | 18 |
| CHANGED FEATURES IN RELEASE 8.00 | 19 |

| | |
|--|----|
| HTML Control: Edge based on Chromium (WebView2 Control) is the default browser control | 19 |
| UAC virtualization is no longer enabled..... | 19 |
| SAP UI Landscape: Handling for loading server configuration files in case of certificate errors. | 19 |
| NO LONGER SUPPORTED / AVAILABLE..... | 20 |
| KW Add-On for SAP GUI no longer contains HTML editing component | 20 |

This document gives you an overview of what is new in release 8.00 of SAP GUI for Windows.

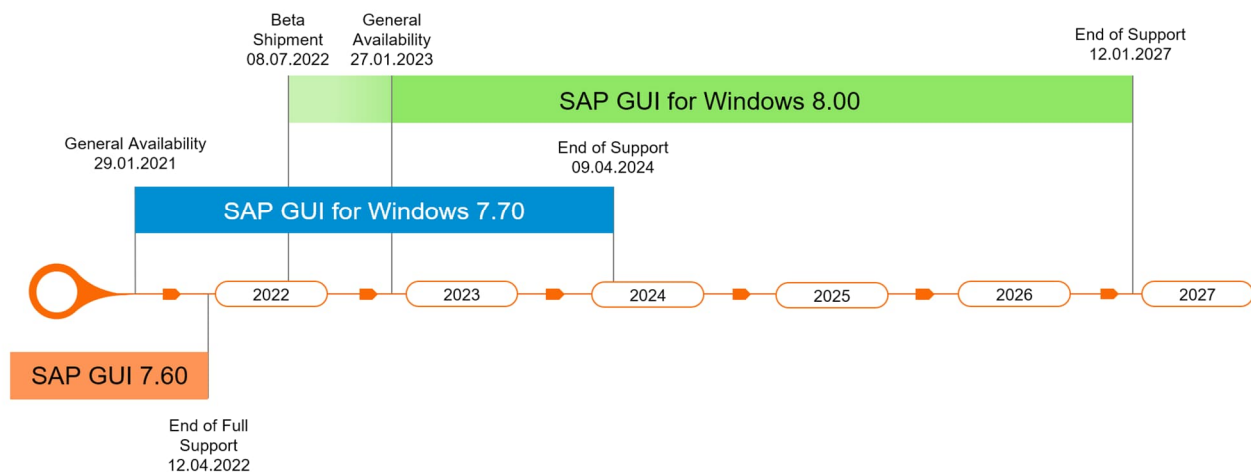
SAP GUI FOR WINDOWS LIFECYCLE

SAP GUI for Windows 8.00 was created with Microsoft Visual Studio 2022 which is in mainstream support by Microsoft until 12th of January 2027 (see also <https://docs.microsoft.com/en-us/lifecycle/products/visual-studio-2022>).

Therefore, SAP GUI for Windows 8.00 is supported until 12th of January 2027.

The chart below shows the lifecycle of SAP GUI for Windows releases 7.60 up to 8.00. For the latest information refer to SAP Note [147519](#).

SAP GUI Roadmap / Development Environment



PLATFORM SUPPORT

- Windows 10 32-bit (only Education, Pro, and Enterprise editions)
- Windows 10 64-bit on x64 (AMD) and Intel EM64T (only Education, Pro, and Enterprise editions)
- Windows 11 64-bit on x64 (AMD) and Intel EM64T (only Education, Pro, and Enterprise editions)
- Windows Server 2016 64-bit on x64 (AMD) and Intel EM64T
- Windows Server 2019 64-bit on x64 (AMD) and Intel EM64T
- Windows Server 2022 64-bit on x64 (AMD) and Intel EM64T

SAP Note [66971](#) provides the latest information on platforms supported by SAP GUI for Windows.

NEW FEATURES IN RELEASE 8.00

True 64bit version of SAP GUI for Windows

Up to release 7.70, SAP GUI for Windows was only available as a 32bit version with the exception being the 64bit versions of the automation controls (Logon Control, Table Factory Control, BAPI Control and Function Control).

The 32bit version works well on 64bit operating systems and runs in the so-called “emulation” (see also <https://docs.microsoft.com/en-us/windows/win32/winprog64/running-32-bit-applications>). However, this has a couple of drawbacks when it comes to memory utilization and integration with other 64bit processes. The most important limitation in this area was overcome when we started supporting 64bit Microsoft Office versions in SAP Desktop Office Integration.

Regardless of this, we keep getting requests for full 64bit support in SAP GUI for Windows and thus decided to implement, deliver, and support such a version. Therefore, as of SAP GUI for Windows 8.00, the SAP GUI delivery includes both a 32bit version and a 64bit version. You can decide which version to use (parallel usage of both versions on the same client PC is not possible).

The 64bit version offers an almost complete feature set with the following differences to the 32bit version:

- No parallel installation of 32bit and 64bit SAP GUI for Windows versions

The SAP GUI for Windows installation prevents a parallel installation of a 32bit and a 64bit version. You need to decide which version to install before installing. This is required because a parallel installation would cause massive problems. Due to the Controls technology being used, installations and uninstallations of a second SAP GUI version would damage the second / remaining version.

- No support for systems older than SAP_BASIS 7.00

The 64bit version of SAP GUI for Windows does not support SAP systems running with older versions than SAP_BASIS 7.00. Even though all these SAP products are already out of support by SAP this may still affect you. If you need to use legacy systems, keep using the 32bit version of SAP GUI for Windows.

When trying to log on to such a legacy system, the user will see a popup with additional information and the logon attempt will be refused.

- Calendar Synchronization for Microsoft Outlook

This component will not be supplied as a 64bit version. However, the 32bit version can be combined with a 64bit version of SAP GUI for Windows as long as a 32bit version of Microsoft Office is used. See also SAP Note [1448739](#).

- SAP Business Explorer

This component will not be supplied as a 64bit version. However, the 32bit version can be combined with a 64bit version of SAP GUI for Windows if a 32bit version of Microsoft Office is used. See also SAP Note [3213997](#).

- Support for hospital graphic (gnhox.exe)

The hospital graphic can only be used in very old SAP systems and there are technical alternatives. Therefore, this component is not included in the installation of a 64bit version of SAP GUI for Windows. See SAP Note [3083686](#).

- Office Integration / Excel Inplace

Even though the combination of a 64bit SAP GUI for Windows version with a 32bit Office product works, our recommendation is to use a 64bit version of Microsoft Office together with a 64bit version of SAP GUI for Windows, because this results in a better performance. However, you must keep in

mind that the components "CalendarSynchronization for Microsoft Outlook" and "SAP Business Explorer" do not support 64bit Office products (see above).

- External components

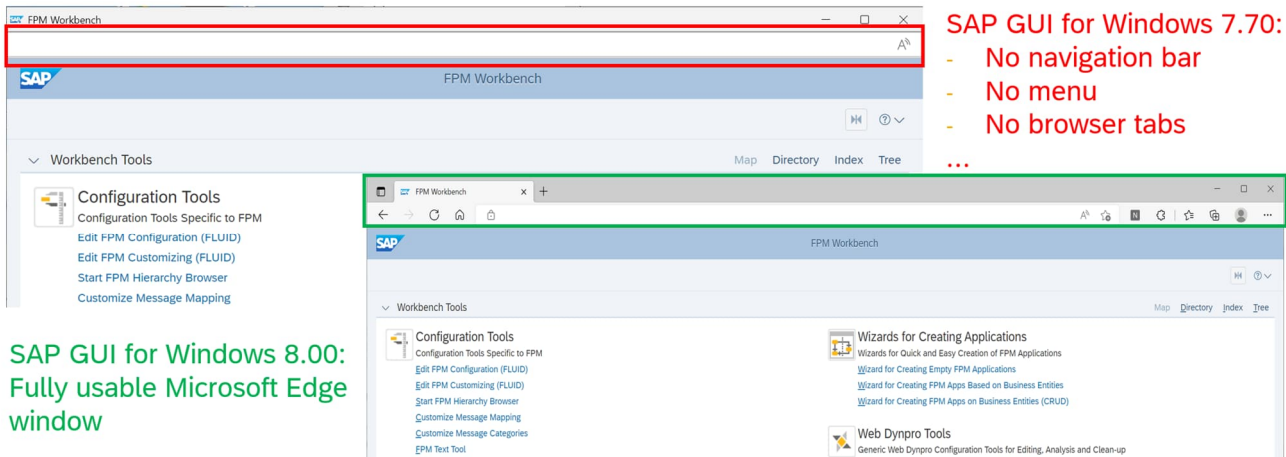
SAP is not responsible for components which are added to the SAP GUI for Windows installation by external vendors. We have published our intention to create a 64bit version of SAP GUI for Windows very early, but it is also up to those vendors to react accordingly and provide 64bit versions of their software if needed.

See SAP Note [3218166](#) for the latest updates.

HTML Control based on WebView2 (Edge)

Fully usable external browser window

SAP GUI for Windows 7.70 introduced an alternative browser control based on Microsoft Edge (WebView2 Control). However, due to technical differences between Internet Explorer and WebView2, the new control has some disadvantages (see also SAP Note [2901278](#)). With SAP GUI for Windows 8.00 we are closing one of the most important gaps: When opening an external browser window from within SAP GUI, the browser window can now offer full navigation features:



This new feature requires the browser extension “SAP GUI connector for Microsoft Edge” which connects SAP GUI for Windows with the Microsoft Edge browser. The extension will be available in the Microsoft Edge Add-Ons Store. If the extension is installed and enabled and you have activated the feature on SAP GUI for Windows side (see SAP Note [3258944](#)), SAP GUI for Windows 8.00 and newer can open a tab in the regular Edge browser instead of the limited window as you can see above.

Embedded HTML documents can use ActiveX objects

As opposed to the HTML Control based on Internet Explorer, the HTML Control based on WebView2 / Edge does not allow embedded HTML documents a direct interaction with ActiveX Controls. This is due to a restriction in Microsoft WebView2.

With the ABAP extensions delivered in SAP Note [3260025](#) and SAP GUI for Windows 8.00, it is possible to supply an ActiveX object to an HTML document and allow the interaction between these objects. To benefit from this new functionality, the respective ABAP application needs to supply information on the object to be invoked to SAP GUI.

Rendering and UI features

Modernized rendering in Quartz Themes

The rendering engine used for displaying the Quartz Themes has been completely reworked leading to a more harmonized display of Quartz (for example the rounded corners look much better). Additionally, this paves the way for further innovations beyond release 8.00 (potentially for adding custom theming support).

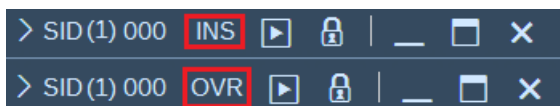
The following screenshot shows two improvements in the Quartz themes:



The OKCode (“command”) field now offers buttons for deleting entries in its history via mouse and the visualization of the dotted focus has been substantially improved.

Displaying editing mode (“INS” / “OVR”) in Belize and Quartz themes

As opposed to older themes, the Belize and Quartz themes by design did not show the indicator for the editing mode in the system information area. Based on user feedback we are re-introducing this feature on an optional basis in SAP GUI for Windows 8.00. The feature can be activated in SAP GUI for Windows options dialog (page “Theme Settings”) and when activated looks like this:



SAP GUI Scripting: Correct handling of visibility properties for themes as of Belize

Starting with the Belize theme, the objects in the SAP GUI window have been re-arranged. For example, the GUI Toolbar (also “System Toolbar”) and the Application Toolbar have been merged into the so-called “Header Toolbar”. This had an impact on the SAP GUI Scripting properties which allow hiding parts of the SAP GUI main window. These are the respective properties (offered by class GuiMainWindow) and their effects on themes older than Belize:

- ButtonbarVisible: Hides the Application Toolbar
- StatusbarVisible: Hides the Statusbar
- TitlebarVisible: Hides the Titlebar (if present)
- ToolbarVisible: Hides the GUI Toolbar

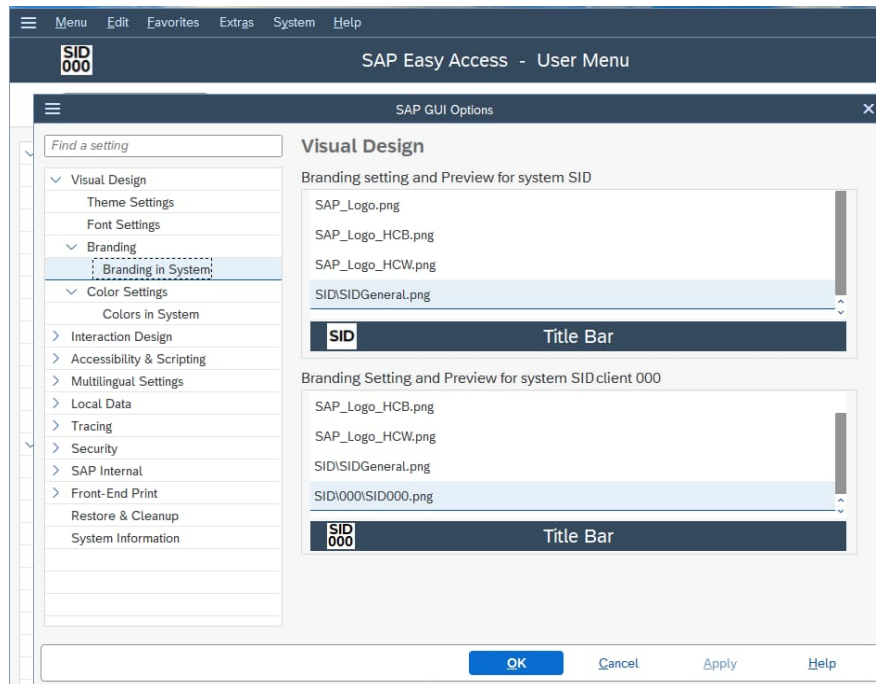
As of SAP GUI for Windows 8.00, the properties mentioned above can be used again. However, since the objects in the main window have been changed, the properties work in a slightly different way. The Header Toolbar will for example only be hidden if at least both the properties ButtonbarVisible and ToolbarVisible have been set to “False”.

Branding Image: Images can be configured per SAP system and client

Until now only a single branding image could be configured regardless of which SAP system SAP GUI is connected to or to which client in this system you are logged on to. However, there are cases in which different images per system are desired (for example if systems are hosted for different customers or if you would like to better distinguish systems).

Therefore, as of SAP GUI for Windows 8.00 you can define and select branding images per SAP system and client. This is basically the same functionality that is already available for the selection of system specific colors.

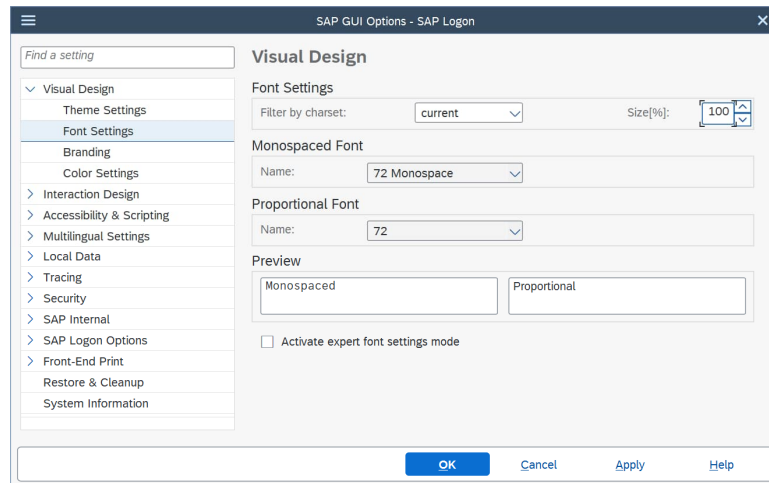
In SAP GUI options dialog this looks like this (in the background you see a SAP GUI window with client specific image at the top right):



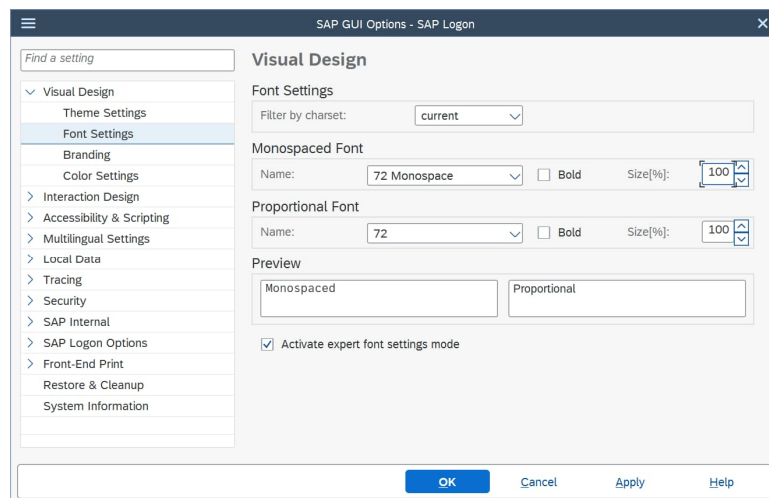
More information how to use this feature can be found in the SAP GUI for Windows Administration Guide. The images to be used as branding images need to be present on the client PC in a specific file structure that you can for example create via NWSAPSetup.

Revised font settings dialog and persistence of font settings per character set

The SAP GUI for Windows options dialog offers a page for adjusting the font settings for the monospaced font and the proportional font. In the past the dialog showed the font size in points which lead to a lot of misunderstandings, because internally SAP GUI for Windows cannot work with points, but with a scaling factor that was calculated based on the input in points. Therefore, the font settings dialog has been completely revised and the selection of the font size is done directly via a scaling factor in percent:



Since in most cases users only want to change the font size, the dialog is displayed in a basic mode unless the checkbox “Activate expert font settings mode” is activated. In this case the dialog offers all font-related settings:



Furthermore, it is now possible to store different font settings including the font size per character set used. This means if you are working with multiple languages using different character sets (for example English and Japanese) SAP GUI for Windows is displayed correctly in both cases. So far, only the font names were remembered which could lead to display issues. The dialog allows an easy maintenance of the font settings per character set via the combobox “Filter by charset”.

General recommendation: Changing the font size in SAP GUI for Windows should only be considered if working with the scaling provided by Windows is not sufficient. SAP GUI for Windows reacts on the Windows scaling factors.

SAP Logon

Secure Network Connection without Single Sign-On as configurable default

Since SAP GUI for Windows 7.60 the checkbox "Activate Secure Network Communication" in the Secure Network Settings Page of the SAP Logon dialogs for creating a new connection or performing a variable logon is automatically selected if the SAP system can support SNC and an SNC product is installed on the client PC. However, this does not take the situation into account when the server can do SNC, but the client product can only do SNC, but not SSO. In this case a user may unintentionally create a connection with activated SSO that will not be working.

Therefore, release 8.00 introduces a registry setting for the administrator that allows changing the default state of the "Activate Secure Network Communication".

[HKEY_LOCAL_MACHINE\SOFTWARE\SAP\SAPLogon\Options]
[HKEY_LOCAL_MACHINE\SOFTWARE\Wow6432Node\SAP\SAPLogon\Options]
"ActivateSNCSSOByDefault" [REG_DWORD]

- Value not present or 0:
 - Checkbox "Activate Secure Network Communication" is checked
 - Checkbox "SNC logon with user/password (no Single Sign-On)" is not checked
 - This matches the behavior in SAP GUI for Windows 7.60 and 7.70
- Value 1:
 - Checkbox "Activate Secure Network Communication" is not checked
 - This matches the behavior prior to SAP GUI for Windows 7.60.
- Value 2:
 - Checkbox "Activate Secure Network Communication" is checked
 - Checkbox "SNC logon with user/password (no Single Sign-On)" is checked

See also SAP Note [3074756](#).

Improvements for sorting and ordering columns

As of release 8.00, SAP Logon (Pad) remembers the sort order applied by the user as well as the sequence of the columns and the column widths. An administrator can roll-out default values for these settings. See SAP Notes [3099771](#) for more information. Furthermore, columns relevant for SAP Shortcuts and Favorites were added in the Workspace View and List View so that all relevant data can be displayed in these views as well. The available function for hiding columns was extended so that an administrator can decide which columns are needed. This is explained in SAP Note [3100231](#).

Language Selection: Checking operating system prerequisites

SAP GUI for Windows is a non-Unicode program. Therefore, SAP GUI can only be correctly displayed in the language of your choice if the system locale defined under Windows matches your language selection. For example, if you would like to display SAP GUI for Windows in Japanese without any visual issues like garbled characters, you need to use the Japanese system locale.

As of SAP GUI for Windows 8.00, the SAP GUI options dialog checks whether a correct display of SAP GUI for Windows will be possible with the language you selected. If not, SAP GUI for Windows displays a warning and falls back to using English language to guarantee a correct display of all contents. Previously, SAP GUI for Windows simply accepted any selection which could lead to display issues.

SAP UI Landscape: Backup for user defined files

It happens that a local SAP UI Landscape file is overwritten by another process or gets lost somehow. This is very annoying for users, because these files may contain a lot of connections / SAP shortcuts created by the user over the course of years. Therefore, SAP Logon now creates backups of the local SAP UI Landscape file. When a file is accidentally overwritten, the user can retrieve one of the backups and continue working. See SAP Note [3263097](#).

Usability improvements

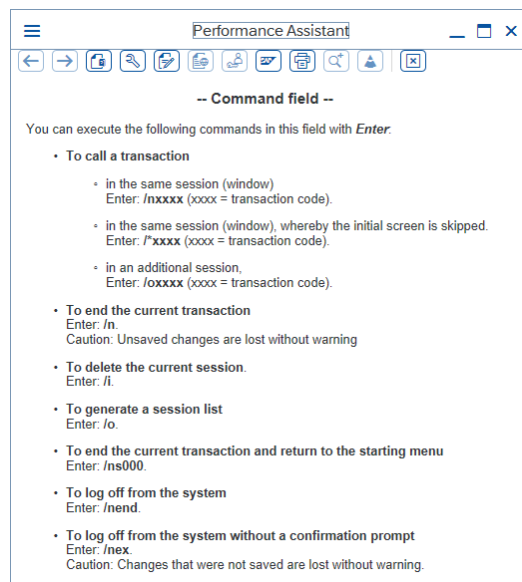
Checkboxes and radiobuttons / radiobutton groups: Improved keyboard navigation

Checkboxes and radiobuttons may directly trigger an event when selected (depending on application settings). When using mouse, it is possible to abort a click by moving the cursor away from the checkbox or radiobutton. As of release 8.00 it is also possible to abort the selection when using keyboard. To achieve this, the user needs to press SHIFT while still holding down SPACE. This is the same functionality already available for regular buttons. Just like before the focus can be set to radiobuttons without selected them via CTRL + CURSOR.

Additionally, HOME and END keys can now be used to navigate to the first and last active radiobutton in a radiobutton group.

Dialogbox Container: Improved keyboard navigation

Dialogbox containers (most prominent examples are the Performance Assistant and the GOS Container window) are amodal windows which have not been well-integrated into the tabchain of SAP GUI until now. It was not possible in a reliable way to move the focus from or to a dialogbox container via keyboard.



This has been improved in release 8.00:

- TAB and SHIFT + TAB navigate from element to element within the dialogbox container
- CTRL + TAB and CTRL + SHIFT + TAB navigate from group to group within the dialogbox container
- CTRL + TAB while the focus is within the last group on the dialogbox container navigates to the active SAP GUI window or another dialogbox container (if multiple are open)
- CTRL + SHIFT + TAB while the focus is within the first group on the dialogbox container navigates to the active SAP GUI window or another dialogbox container (if multiple are open)
- CTRL + TAB while the focus is within the last group on the active SAP GUI window navigates to the first dialogbox container (if at least one is open)
- CTRL + SHIFT + TAB while the focus is within the first group on the active SAP GUI window navigates to the last dialogbox container (if at least one is open)

Table Controls: Improved keyboard navigation

Table controls now support additional and refined keyboard shortcuts for improved navigation and more consistency:

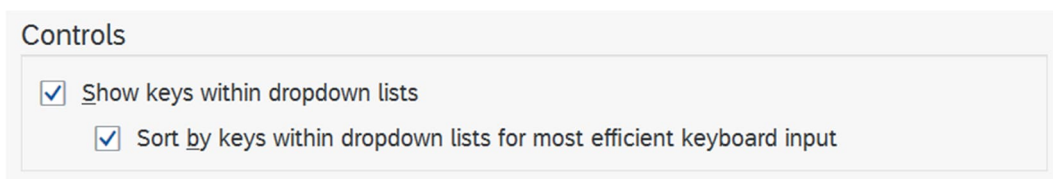
- CTRL + UP / CTRL + DOWN: Scrolls the table control to the very top or bottom and moves the focus into the first cell / last cell that contains data of the same column.
- CTRL + HOME / CTRL + END: Scrolls the table control to the very top or bottom and moves the focus into the first cell of the first row / last cell that contains data of the last column.
- CTRL + PAGE UP / CTRL + PAGE DOWN (if supported by the application): Scrolls the table control to the very top or bottom and keeps the focus in the current cell if possible.
- The “Select All” button (if present) is now part of the tabchain and can be triggered like any other button in SAP GUI for Windows (SPACE / ENTER)

Combobox Control: Showing keys and sorting by keys

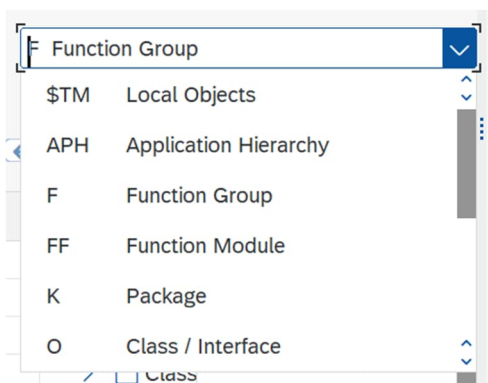
Since a couple of releases, SAP GUI for Windows offers an ActiveX control version of the UI element combobox. The purpose of this control is to allow the usage of comboboxes in areas on the screen where only an ActiveX control can be used (containers). The control looks almost like a “normal” combobox, but it has a slightly different feature set.

With SAP GUI for Windows 8.00 we are closing the most important gaps between the combobox control and the “normal” combobox: The display of keys and the option to sort the entries by key in the combobox control. These options contribute a lot to the usability and the efficiency of use of the combobox control.

The features are controlled by the same settings that are also relevant for the “normal” combobox (SAP GUI Options Dialog -> Interaction Design -> Visualization 1):



With both options activated, a combobox control may look like this (example from transaction SE80):




At the left you see the keys and at the right the values of the entries.

When typing in a combobox showing keys, the selection of items is done based on the keys and not on the values.

ALV Grid Control: Copy & Paste with gaps

Clipboard content, especially when taken from applications like Microsoft Excel, may contain empty cells like in this example:

| | | | |
|-----------|-----------|--|------------|
| Some data | | | |
| | | | |
| | More data | | |
| | | | Final data |



So far, the ALV Grid Control used to overwrite the content of all cells when a block as depicted above was pasted. As an example, if one pasted the above data into an ALV Grid Control looking like this

| | | | |
|--------|-----|---------|-----|
| 422,94 | USD | 747-400 | 385 |
| 422,94 | USD | 747-400 | 385 |
| 422,94 | USD | 747-400 | 385 |
| 422,94 | USD | 747-400 | 385 |
| 422,94 | USD | 747-400 | 385 |
| 422,94 | USD | 747-400 | 385 |

the result would have been:

| | | | |
|-----------|------|---------|------------|
| Some data | | | |
| | More | | |
| | | | Final data |
| 422,94 | USD | 747-400 | 385 |
| 422,94 | USD | 747-400 | 385 |

However, this result may be unexpected, and it was not consistent with the handling in SAP GUI for Java and SAP GUI for HTML. Therefore, as of SAP GUI for Windows 8.00 the default behavior for pasting data into an ALV Grid Control is changed, so that empty values do not overwrite cell content.

In the example above, the result with the new feature is:

| | | | |
|-----------|------|---------|------------|
| Some data | USD | 747-400 | 385 |
| 422,94 | USD | 747-400 | 385 |
| 422,94 | More | 747-400 | 385 |
| 422,94 | USD | 747-400 | Final data |
| 422,94 | USD | 747-400 | 385 |
| 422,94 | USD | 747-400 | 385 |

If desired, the old behavior can be restored by setting the registry value `ALVPasteOverwriteValues` to 0.

This value can be set under (HKCU has priority over HKML):

HKEY_CURRENT_USER\SOFTWARE\SAP\SAPGUI Front\SAP Frontend Server\Customize

or

HKEY_LOCAL_MACHINE\SOFTWARE\WOW6432Node\SAP\SAPGUI Front\SAP Frontend Server\Customize

ALV Grid Control: Control characters are no longer pasted into editable ALV

SAP Note 1825127 explains that ALV Grid does not support non-printable control characters. Until now users could enter such characters in SAP GUI for Windows for example by copying cell content from Microsoft Excel into an editable ALV Grid. The copied characters were either displayed as “#” or other symbols and could cause functional issues in some applications.

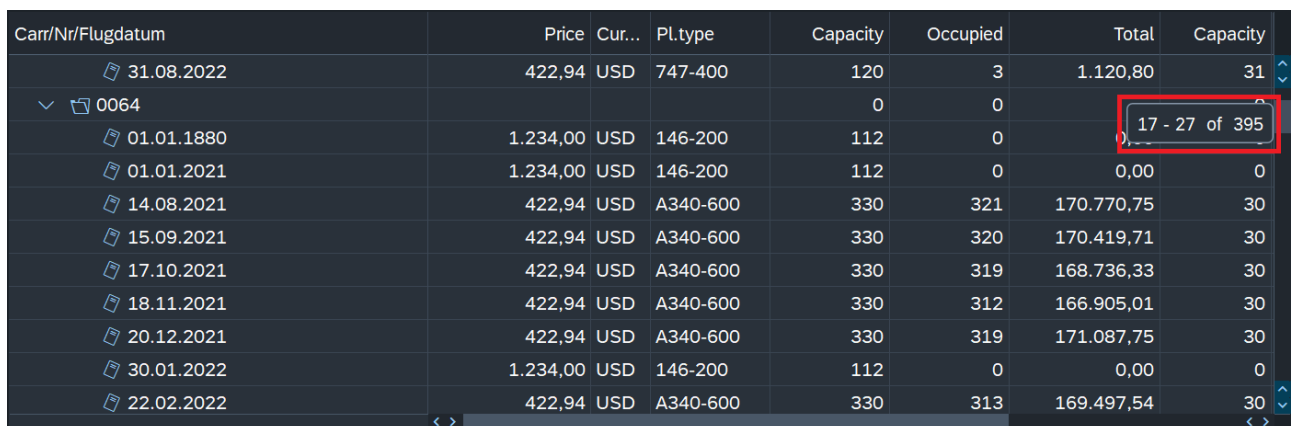
Since ALV Grid does not support these characters anyway, we are now preventing the pasting of such characters to avoid errors. Control characters are removed from a text which is pasted into an ALV Grid. The remainder of the text is pasted just like before.

ALV Grid Control: Improved keyboard navigation for comboboxes

The keyboard support for comboboxes embedded into an ALV Grid Control has been extended and is now equivalent to the keyboard support for other comboboxes outside the ALV Grid Control. Specifically, this also means that values are no longer taken over into the cell automatically, but only when the user confirms the selection actively (ENTER) or implicitly (by navigating away after changing the selection). This also enables users to abort a selection via ESC. Furthermore, the selection by typing the leading characters of hits in the dropdown list has been improved and the dropdown can be opened / closed also via F4.

Tree Controls: Scrolling indicator

Tree controls now show a so-called "scrolling indicator" when the user scrolls vertically in the tree via mouse or keyboard. This indicator helps the user to easily recognize the position of the currently displayed block of data within the table and allows a more precise drag and drop of the scroll bar button (thumb):



| Carr/Nr/Flugdatum | Price | Cur... | PL.type | Capacity | Occupied | Total | Capacity |
|-------------------|----------|--------|----------|----------|----------|----------------|----------|
| 31.08.2022 | 422,94 | USD | 747-400 | 120 | 3 | 1.120,80 | 31 |
| 0064 | | | | 0 | 0 | 17 - 27 of 395 | |
| 01.01.1880 | 1.234,00 | USD | 146-200 | 112 | 0 | | 0 |
| 01.01.2021 | 1.234,00 | USD | 146-200 | 112 | 0 | 0,00 | 0 |
| 14.08.2021 | 422,94 | USD | A340-600 | 330 | 321 | 170.770,75 | 30 |
| 15.09.2021 | 422,94 | USD | A340-600 | 330 | 320 | 170.419,71 | 30 |
| 17.10.2021 | 422,94 | USD | A340-600 | 330 | 319 | 168.736,33 | 30 |
| 18.11.2021 | 422,94 | USD | A340-600 | 330 | 312 | 166.905,01 | 30 |
| 20.12.2021 | 422,94 | USD | A340-600 | 330 | 319 | 171.087,75 | 30 |
| 30.01.2022 | 1.234,00 | USD | 146-200 | 112 | 0 | 0,00 | 0 |
| 22.02.2022 | 422,94 | USD | A340-600 | 330 | 313 | 169.497,54 | 30 |

In SAP GUI for Windows 7.70 the scrolling indicator was introduced for the table control and the ALV Grid control (GridView Control). With SAP GUI for Windows 8.00 the tree control also supports this feature.

This feature is available for all themes except for “Classic Theme”.

Security

Checking the validity of the registration of ActiveX Controls invoked by SAP GUI

Microsoft Windows allows the registration of ActiveX objects in the Windows registry under different root nodes and arbitrary folders on the hard disk (some not requiring administrative permissions).

SAP GUI for Windows only uses own ActiveX objects from secure locations, but also requires 3rd party ActiveX objects which cannot be secured by SAP. As of SAP GUI for Windows 7.70 patchlevel 9, SAP GUI for Windows can therefore check the creation of an ActiveX object originating from an SAP GUI for Windows process for validity. In case a potentially unsafe registration of an ActiveX object is detected, SAP GUI for Windows displays a security warning. If such a warning is shown, the user can save the current work, but after confirming the dialog, SAP GUI is terminated to avoid any security breach.

NEW FEATURES IN PATCHLEVEL 3 OF RELEASE 8.00

HTML Control based on Edge: Custom URI support added

Custom URI scheme support is now available for the HTML Control based on Edge as well. This affects URLs starting with SAPHTML, SAPHTMLP, SAPEVENT, SAPR3 which are used in HTML content embedded in SAP GUI for Windows to communicate from within the HTML Control with the ABAP application that is running (most prominent example being catalog applications). To benefit from this functional extension, you need to use at least patchlevel 3 and the WebView2 runtime version 113 or newer. See also SAP Note [3331099](#).

In patchlevel 4 this functionality was revised to counter side-effects introduced by the change (see also SAP Note [3355910](#)). ABAP applications expecting upper or mixed case sapevent calls need to adjust this to lower case, because the respective WebView2 API delivers “sapevent” always as lower case regardless of the case in the HTML document. According to Microsoft this is as per the design and in accordance with web standards.

NEW FEATURES IN PATCHLEVEL 4 OF RELEASE 8.00

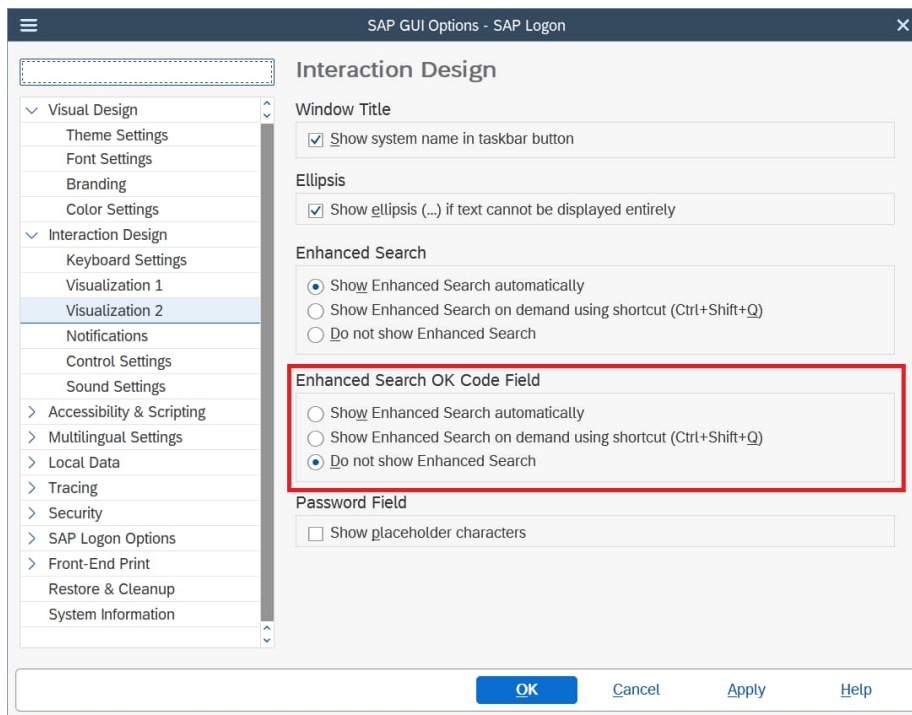
Keyboard improvements for menus

Menus in SAP GUI for Windows now support the following additional keyboard commands:

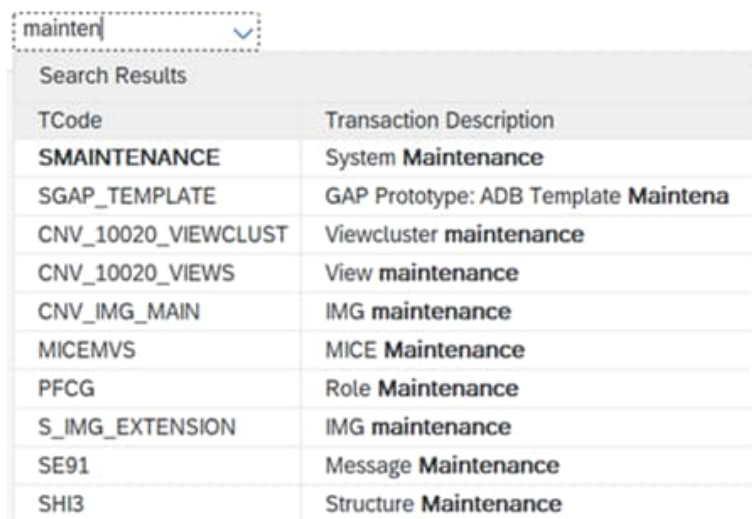
- HOME: Move the selection to the first enabled item on the current menu level
- END: Move the selection to the last enabled item on the current menu level
- SPACE: Select the current item
- SHIFT while SPACE is pressed: Abort the selection process

Enhanced Search for command field (OK Code field)

As of patchlevel 4, an Enhanced Search can be activated for the command field in a similar fashion like for regular fields. By default, this new feature is not activated, but you can use the options dialog page “Interaction Design” > “Visualization 2” to turn the feature on or activate an “on demand mode”:



When activated, the Enhanced Search for the command field may for example look like this:



This means, you cannot just search for transaction codes, but also for the parts of the transaction description and the result list can combine input history entries and enhanced search results. The selected transaction code can be taken over into the command field or the transaction can be executed directly.

With patchlevel 5, an additional “See all search results” dialog is available, just like for normal input fields in SAP GUI for Windows. However, please make sure to fulfill all technical requirements as per the SAP Notes listed below.

More information can be found in the end user documentation and in these SAP Notes:

- Technical prerequisites: SAP Note [3354415](#)
- Handling of special OK codes by the Enhanced Search: SAP Note [3358285](#)

NEW FEATURES IN PATCHLEVEL 7 OF RELEASE 8.00

SAP UI Landscape Validation Tool

Since many releases SAP GUI for Windows uses the SAP UI Landscape format for storing all kinds of entities in SAP Logon (Pad). The SAP UI Landscape files are XML based and have a certain amount of complexity. Therefore, when creating such files for deploying them in your internal landscape, errors may be introduced can be difficult to see at first glance.

As of patchlevel 8 the installation of SAP GUI for Windows 8.00 contains the program "LandscapeValidation.exe" which triggers a validation of the landscape files used by your SAP GUI installation. This validation includes a check against the XML schema as well as several rule-based validations to detect the most common issues we have seen in support situations so far (like the usage of duplicate or illegal UUIDs).

More information on the tool and how to use it can be found in SAP Note [3440785](#).

Warning when local SAP UI Landscape file cannot be written

Sometimes the local configuration file for SAP Logon is set to read-only on operating system level, but the user uses SAP Logon (and not SAP Logon Pad). Obviously, this is a very confusing situation for affected users, because whatever they add or change at runtime in SAP Logon is lost when SAP Logon is started next time.

As of patchlevel 7 to avoid this kind of confusion a warning is displayed when SAP Logon is started and the local SAP UI Landscape file cannot be written. Additionally, SAP Logon is launched in a read-only mode in this case. If there should be a good reason for wanting the old behavior back this can be achieved by distributing the registry value mentioned in SAP Note [3442164](#). However, in such cases we recommend the usage of SAP Logon Pad or to disable the editing functionality in SAP Logon via the corresponding option.

NEW FEATURES IN PATCHLEVEL 10 OF RELEASE 8.00

Support for new ABAP method to detect used browser engine in HTML Control

An ABAP application using an HTML Control to display HTML content in the SAP GUI window may be interested in which browser engine will be used to render the content. The new ABAP method `CL_GUI_HTML_VIEWER=>GET_BROWSER_ENGINE` from SAP Note [3490909](#) has been introduced to provide this very information. In addition to the ABAP extension from the SAP Note mentioned above, patchlevel 10 of SAP GUI for Windows 8.00 or a newer patch is required to use the functionality (see also SAP Note [3498787](#)).

NEW FEATURES IN PATCHLEVEL 13 OF RELEASE 8.00

Support for new ABAP method to set the focus on a specific button in toolbar control

In SAP Note [3548462](#) the method `SET_FOCUS_BUTTON` has been added to class `CL_GUI_TOOLBAR`. This method can be used by an ABAP application to set the focus to one of the buttons in a toolbar control. In case of screen changes this may be required to preserve the focus position and thus have a reasonable usability in an application. In addition to the ABAP extension from the SAP Note mentioned above, patchlevel 13 of SAP GUI for Windows 8.00 or a newer patch is required to use this functionality (see also SAP Note [3581904](#)).

CHANGED FEATURES IN RELEASE 8.00

HTML Control: Edge based on Chromium (WebView2 Control) is the default browser control

As of SAP GUI for Windows 8.00, the default setting for the browser control used to host HTML content inside SAP GUI for Windows is no longer the Internet Explorer control, but Edge based on Chromium (WebView2 Control). Due to the de-support of Internet Explorer by Microsoft (see also [SAP Note 3058309](#)) and the strong desire to move to a more modern browsing experience, this is a change which just reflects the facts and the expectation of most SAP GUI users. See [SAP Note 2913405](#) for more information on browser controls in SAP GUI for Windows.

UAC virtualization is no longer enabled

In previous SAP GUI for Windows releases the UAC virtualization (see also [https://docs.microsoft.com/en-us/previous-versions/bb756973\(v=msdn.10\)](https://docs.microsoft.com/en-us/previous-versions/bb756973(v=msdn.10))) was activated. The idea of the UAC virtualization is to redirect access to protected resources in the file system (c:\Windows* \ C:\Program Files*) and in the registry (HKEY_LOCAL_MACHINE) to mirror locations ("VirtualStore"). With UAC virtualization enabled, SAP GUI for Windows or applications running in SAP GUI for Windows could attempt to write such protected resources. The attempt to do so resulted in changes in the VirtualStore. This caused issues which were difficult to analyze, because it is not immediately transparent that something is taken from the VirtualStore or why something has been written to those locations.

SAP GUI for Windows neither needs write access to HKEY_LOCAL_MACHINE nor to protected folders in the file system. Therefore, as of SAP GUI for Windows 8.00 the UAC virtualization is disabled. However, it is possible that applications or external programs running in the context of SAP GUI for Windows may need such a kind of access. This kind of situation needs to be considered an error which must be corrected in the affected applications or external programs. Files must be stored in user specific locations like the SAP GUI for Windows documents folder or the folder for temporary files and changes in the registry need to be applied under HKEY_CURRENT_USER only.

SAP UI Landscape: Handling for loading server configuration files in case of certificate errors

To achieve a more secure default configuration, as of SAP GUI for Windows 8.00, web-server-based SAP UI landscape files are not loaded anymore by SAP Logon in case certificate errors occur. This behavior can be customized according to the settings explained in [SAP Note 2892419](#). However, we generally strongly recommend using valid certificates.

NO LONGER SUPPORTED / AVAILABLE

KW Add-On for SAP GUI no longer contains HTML editing component

The subcomponent "KW HTML Editor" of the KW Add-On is no longer available as of SAP GUI for Windows 8.00. See [SAP Note 3147887](#) for further information.